

TESTING AT THE EARLBECK TECHNICAL CENTER

The dedicated professionals at Earlbeck Technical Center would like your testing experience to be as pleasant as possible. This guide seeks to provide you with some valuable information so you may know what to expect when you visit our center to perform a welder qualification test coupon.

When you arrive, please sign in with the Testing & Training Manager, Don Hodges.

What to Bring

Photo Identification, safety glasses, your welding helmet and personal safety gear, work boots and flame retardant welding clothing.

Our Booths Include

Multiprocess Welding Machines, 4-1/2" Grinder, and a multi-position test fixture

You will be instructed in the operation of the welding equipment particular to your test. It will be your responsibility to set the amperage, voltage and/or wire feed speed for your process. You will be given practice material to set up on.

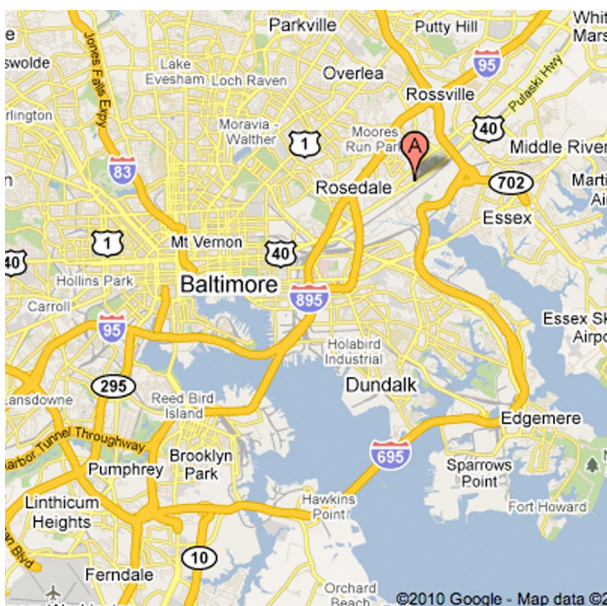
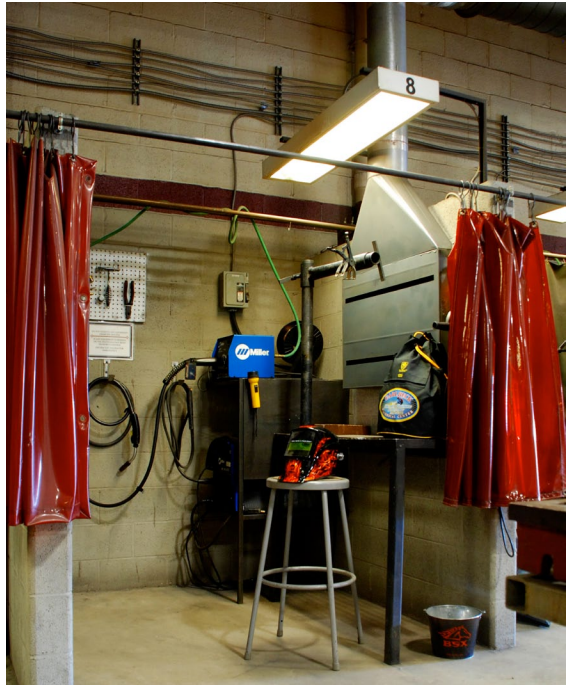
You will be given the test materials appropriate to your test and instructed in the fit-up required. Once you have tacked the coupon, notify the Testing Manager who will assist you with placing the test piece in the chosen position for the test.

NOTE: Once the piece is in position and welding begins, it must remain in that position until completed. This includes grinding.

It is also wise to let us review the coupon after the root pass to assure that all is going well before you spend the time to fill the weld out. Though none of the Codes impose a time limit on the welding of a test piece, most qualification tests can be completed by a skilled welder in less than 4 hours.

When you have completed the test, notify the Testing Manager who will mark the piece for testing. We then kindly ask that you clean up your booth before you leave. You will be notified of your results within five business days in most cases.

Welding a test piece can create a nervous situation for even an experienced welder. We stand ready to assist you in any way that we can.



From the South- I-95 North through the Fort McHenry Tunnel to Exit 61 (Pulaski Hwy), proceed 2 miles east and we will be on the left.

From the North- I-95 or I-83 south to I-695 East (Baltimore Beltway), proceed eastbound to exit 35A (Pulaski Hwy/US RT40), go 1.5 miles and we will be on the right.

From the Eastern Shore and Points East- Route 50 East to I-97 North. Exit 695 East to Key Bridge. Approximately 12 miles to Exit 35 West (Pulaski Hwy/US RT40), go 1.5 miles and we will be on the right. Enter at the first of our two driveways at the sign that says Technical Center.

Good luck,

Jerry Cramblett, Director
Earlbeck Technical Center