

TRAINING AT EARLBECK TECHNICAL CENTER

The dedicated professionals at Earlbeck Technical Center would like your training experience to be as pleasant as possible. This guide seeks to provide you with some valuable information so you may know what to expect when you visit our center for welding training.

When you arrive, please sign in with the Testing & Training Manager, Don Hodges.

What to Bring

Safety Glasses, your welding helmet, personal safety gear, work boots, flame retardant welding clothing and your favorite hand tools

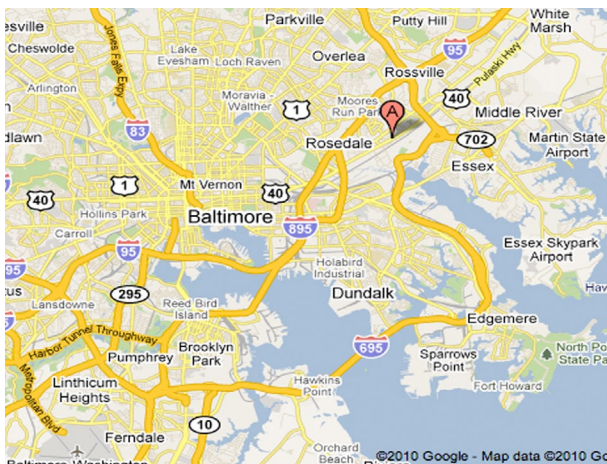
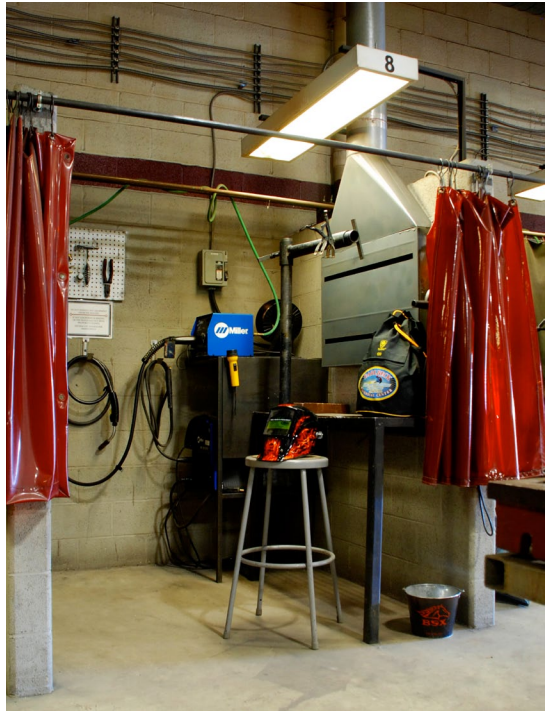
Our Booths Include

Multiprocess Welding Machines, 4-1/2" Grinder, and a multi-position test fixture

You will be instructed in the operation of the welding equipment particular to your test.

We offer a wide variety of welding courses in addition to one on one training. Scheduling & Pricing information for our standard courses are listed on our website www.earlbeck.com. One on one training is done at an hourly rate of \$50 plus materials used. This training is available Tuesdays and Thursdays by appointment, subject to available booth space. Please contact Don Hodges at 410-687-8400 or email at dhodges@earlbeck.com for scheduling.

Whether you are looking to evaluate an employees skills, improve their skills for a particular operation or "brush up" their skills for a certification test, Earlbeck Technical Center has a plan for your employees.



From the South- I-95 North through the Fort McHenry Tunnel to Exit 61 (Pulaski Hwy), proceed 2 miles east and we will be on the left.

From the North- I-95 or I-83 south to I-695 East (Baltimore Beltway), proceed eastbound to exit 35A (Pulaski Hwy/US RT40), go 1.5 miles and we will be on the right.

From the Eastern Shore and Points East- Route 50 East to I-97 North. Exit 695 East to Key Bridge. Approximately 12 miles to Exit 35 West (Pulaski Hwy/US RT40), go 1.5 miles and we will be on the right.

Enter at the first of our two driveways at the sign that says Technical Center.

Good luck,

Jerry Cramblett,
Director
Earlbeck Technical Center

